



Evergreen HOA Summary & Maintenance Responsibilities

The majority of HOA amenities were developed up front in Phase 1 in the central park as well as the gateway roadway into the neighbourhood (Evergreen Way). The HOA drawing set shows each area in detail and has notes on the HOA responsibilities within the HOA defined boundary.

- Entry Feature
 - Location: NE corner of 30th Avenue and Evergreen Way intersection.
 - Responsibilities: **pavers, boulders, shrubs, perennials, mulch, trees, lighting, and electricity costs.**
- Roundabout Feature
 - Location: intersection of Evergreen Way & Emerald Drive
 - Responsibilities: **boulders, shrubs, perennials, mulch, trees, steel decorative cairns, lighting, electricity costs.** Note: turf and paved/concrete is City responsibility.
- Gateway Median
 - Location: Evergreen Way
 - Responsibilities: **trees, shrubs, mulch, lighting, electricity costs.** Note: All concrete is City responsibility.
- Bridge & Waterfall Feature
 - Location: south end of storm water management facility (SWMF)
 - Responsibilities: **Trees, shrubs, mulch, waterfall infrastructure (pump, pipes) faux bridge elements (pilaster railing, stamped concrete) lighting, electricity costs.**
- Lookout Feature
 - Location: east side of SWMF.
 - Responsibilities: **Trees, shrubs, boulders, mulch.**
- Stream Bed Feature
 - Location: north end of SWMF.
 - Responsibilities: **Trees, shrubs, boulders, mulch.**

Natural Park Phase

The only responsibility in this phase is **electrical infrastructure, lighting, and associated electricity costs:**

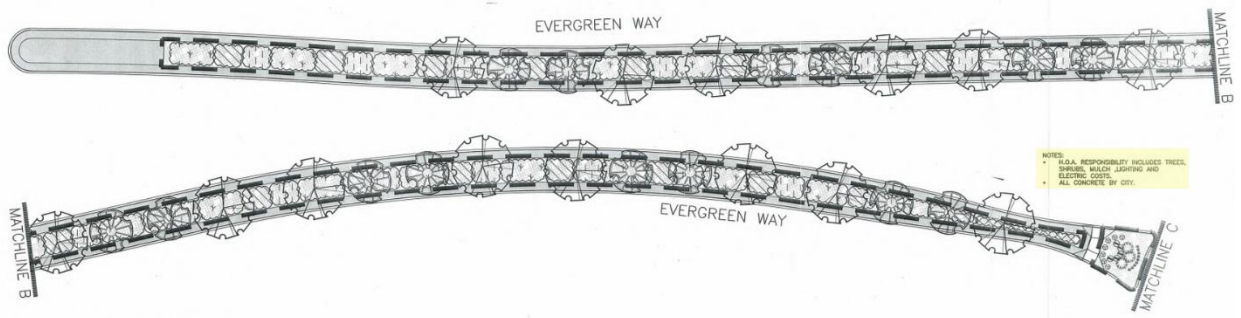
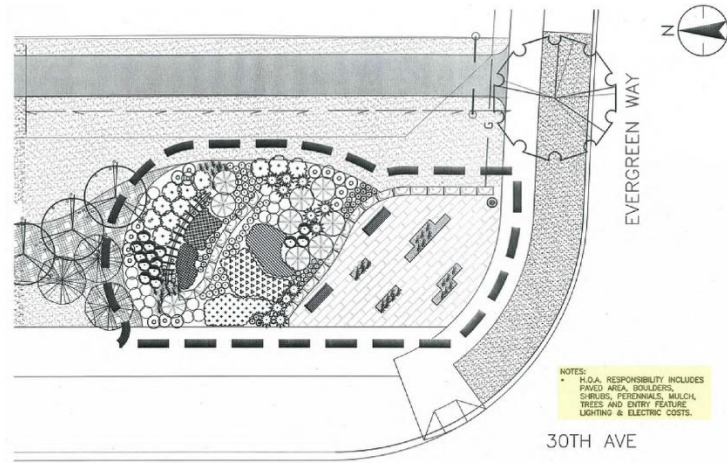
- Natural Park Playgrounds Node
 - Location – West edge of park between roundabout feature and the natural pond.
 - Feature lighting as per drawings: tree, sign and shelter lighting & electricity costs



EVERGREEN

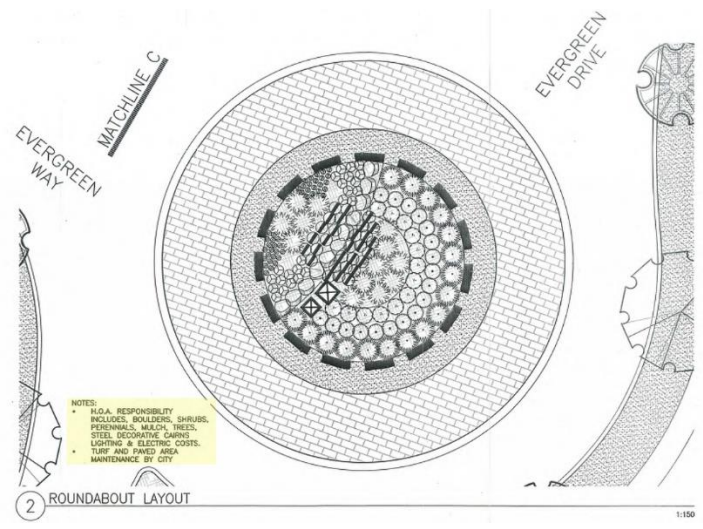
Naturally Exquisite

Evergreen HOA Summary & Maintenance Responsibilities



3 COLLECTOR BOULEVARD LAYOUT

1/20



2 ROUNDABOUT LAYOUT

1:150